

# THRIVE TEACHING SCHOOL

Working in partnership with Rother Education Improvement Partnership

## INITIAL TEACHER TRAINING

### RECRUITMENT EVENT

Saturday June 10<sup>th</sup> 9am to 12pm. East Sussex Recruitment Fayre for School Direct places with advice from St Richard's TSA, Sussex University, Brighton University and East Sussex SCITT.

[Register here](#) or drop in to meet teachers newly qualified and long serving.

Teacher training allocations for 2017-18 recruitment is now live. If you have any requests for School Direct places salaried or non salaried, primary or secondary please contact Lis Wood, Professional Tutor at St Richard's Catholic College.  
[mrswoode@strichardscc.com](mailto:mrswoode@strichardscc.com)

## NQT Induction and Professional Development 2017-18

The Thrive Teaching School Alliance offers a comprehensive and supportive induction process for your NQTs and Induction tutors in partnership with the Sabden Teaching School.

We have been operating as an appropriate body since September 2015 working across schools in East Sussex. We have developed our NQT programme in partnership with the Local Authority to keep paperwork systems streamlined and familiar to schools and to build on the good work of the Local Authority.

### Why choose our Teaching School Alliance?

#### We offer:

\*NQT Welcome meeting in conjunction with Sussex University and the LA

\*Bespoke NQT Development Programme designed by experienced tutors and NQTs for NQTs.

\*Induction Tutor Network led by a highly experienced Induction Tutor.

\*Quality Assurance visits to each NQT and Induction Tutor in their school.

\*Assessment moderation and administration

The total cost of the whole programme is £450.00 (£500 for non TSA schools) per NQT.

## LEADERSHIP PROGRAMMES



**TESLA** **SCHOOL ALLIANCE** **THRIVE**

### Aspiring to lead a Primary School

This programme is for senior leaders in primary schools aspiring to headship

**PROGRAMME AIM:** To prepare for headship in a primary school

This course has been developed through the NCTL

**OUTCOMES**

By the end of the programme you will have:-

- + Carried out a learning walk in three different schools
- + Listened to those headteachers' visions for their schools
- + Worked on the practical aspects of being a primary headteacher
- + Carried out inter-organisational activities in your own school
- + Kept a reflective journal
- + Looked at how to shape a headship application

**DATES**

All sessions 9.00am – 4.00pm

21 June 2017: Culture and Vision—Where am I now? Pound Hill Infant Academy, Crawley

26 Sept 2017: Vision into action—Where do I want to be? Orchards Junior School, Worthing

20 Jan 2018: Action into results—How will I get there? Cartlewood Primary, Southwater

**Cost: £300 per participant**

The DfE has provided funding to support leadership programmes and this enables us to subsidise the course. Supply costs and travel will need to be met by the participant's own school.

To book, please return a completed application form to [achieve@thrivealliance.org.uk](mailto:achieve@thrivealliance.org.uk)

**Closing date for bookings: 9th June 2017**

We look forward to seeing you.

**Feedback from this year's participants:**

*It's made it clear for me how you should lead a team and I have changed the way I do things because of that!*

*I am a lot more confident and school improvement is happening because I'm a lot clearer!*

*I wasn't sure I wanted to be a head but now I do!*

**Early Bird Offer!**

Book by 15th May to pay just £50 (per participant)

Support provided by the Department for Education

Please contact [teachingschool@strichardscc.com](mailto:teachingschool@strichardscc.com) for further details or visit [Aspirant Headteacher details](#). Although this deadline states 9<sup>th</sup> June we can be flexible for strong candidates. There will be another cohort offered in September 2017.

Congratulations to all participants who completed the Programme at the end of May. Many thanks to

# THRIVE TEACHING SCHOOL

Working in partnership with Rother Education Improvement Partnership

Caroline Thayre at Robsack Wood Primary Academy in Hastings for her hospitality and input.

## NATIONAL PROFESSIONAL QUALIFICATIONS IN MIDDLE AND SENIOR LEADERSHIP

Our local cluster shared with St Marks began in March. They are a great group and highly committed to leadership development.

The license for the National Professional Qualifications is currently under review with organisations applying for a new licence. Our Teaching School Alliance will continue to work with the Institute of Education (number 1 in the world for the 4th Year running) and will work alongside them in preparing the content for the new programmes and in training new facilitators across the Alliance. The new qualifications will also include an Executive Headteacher qualification.

The IOE have decided to begin recruitment now for the Autumn term, book now at 2016 prices!

Visit [NPQML](#) and [NPQSL](#) programme details

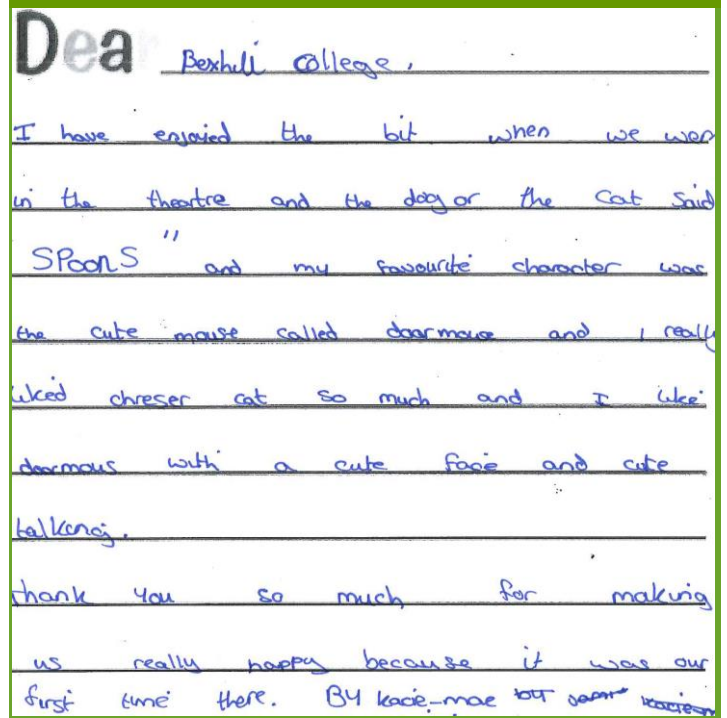


Congratulations to our ML participants from Claverham Community College, Nutley Cof E Primary School, Netherfield Primary School, Ditchling St Margarets CE Primary School, Meads Primary School and Buxted CE Primary School who will complete their face to face sessions in June.



Congratulations to KS5 students from Bexhill College who created a wonderful interactive Alice in Wonderland experience for pupils from St Mary Magdalene's Catholic Primary School, Chantry Community

Primary School and All Saints C.E Primary School. The pupils had a wonderful STEAM experience and are now going on to do their Arts Awards. Below is a thank you letter from a pupil.



## Artsmark



Artsmark has changed its structure. A few schools across our Alliance are currently in the process of applying for this Award which helps schools to strengthen curriculum provision and showcase pupil talent. All the schools are happy to share their journey. Contact us for information or visit [www.artsmark.org.uk](http://www.artsmark.org.uk)

Arts Award Training – we can offer funded training please contact Joanne

**What's on at the Izzard, Bexhill College**  
**Kim Byford SLE**

# THRIVE TEACHING SCHOOL

Working in partnership with Rother Education Improvement Partnership

Thursday 8<sup>th</sup>, 9<sup>th</sup> & 10<sup>th</sup> June  
Sweeny Todd  
7pm  
£12

Set in Victorian London, Sweeney Todd tells of a Fleet Street barber, Benjamin Barker, who was deported to Australia on a trumped up charge because the evil Judge Turpin desired his wife...

Wednesday 14<sup>th</sup> June  
Celebration evening  
7pm  
£3

A review of all the work of the Performing Arts students from 2016/2017. Join us to see how far the students have come and to say a fond farewell to those students who are leaving us for pastures new.

Izzard Youth Theatre  
The Izzard youth group was set up in 2014 for children age between 7 – 16 years. The group is run by industry professionals Lizzii Hills and Liz Johnson who between them have a wealth of experience in both theatre in education for young people and performing in the West End. The youth group focuses on all three disciplines of theatre, singing, dance and acting and aims to give young people the knowledge and understanding of what it takes to be a 'triple threat' performer, alongside having a lot of fun with likeminded friends. The group is competitively priced and meet in term time on Tuesday evenings at The Izzard Theatre (Bexhill College-campus) from 5.30pm-7.30pm. If you are interested in joining the group or would like any more details please contact Natalie Roberts for your FREE trial session [natalieroberts@bexhillcollege.ac.uk](mailto:natalieroberts@bexhillcollege.ac.uk) 01424 214545 ext 1223

## De La Warr Pavilion

Simon Patterson's exhibition on Safari is a great opportunity for pupils of all ages. This exhibition takes the visitor on a mini safari throughout the De La Warr Pavilion where they will encounter, interspersed with Patterson's own work, objects drawn from Bexhill and Hastings Museums.

These objects include artefacts collected by Hastings resident Annie Brassey (1839-87), an English writer and traveller who amassed an extensive collection of ethnographic objects during her voyages around the world on her steam yacht, the Sunbeam. Patterson's display will also include several rather more questionable objects, such as those relating to the notorious Piltdown man, Grey Owl and other local fraudsters, charlatans and fantasists.

Join us to explore the potential of the exhibition SAFARI  
<https://www.dlwp.com/exhibition/simon-patterson/> to enrich cross-curricular and extra-curricular learning.

## NEWS YOU CAN USE!

### Maths Hubs

#### Primary Schools Conference

**Developing Mathematical Thinking. Teaching for Mastery. Depth for All.**

Including workshops led by Primary Mastery Specialists, Subject Leaders of Mathematics, Specialist Leaders of Education, University Lecturers and Independent Experts covering areas such as Teaching for Mastery, fluency, reasoning, questioning, representations, manipulatives and much more!

**Choice of two dates** (Delegates only need to attend one of the dates):

**28<sup>th</sup> June 2017** at the East Sussex National Hotel, Uckfield - [Click here to book 28th June](#)  
OR

**11<sup>th</sup> October 2017** at the Avisford Park Hotel, Arundel - [Click here to book 11th October](#)

9am to 3.30pm

# THRIVE TEACHING SCHOOL

Working in partnership with Rother Education Improvement Partnership

Only £75 per delegate. Places are limited so book now!

(Late cancellations may be charged).

## FREE SECONDARY CPD

Sussex Maths Hub are running a series of **free** CPD sessions to cover the national curriculum, exam changes and Teaching for Mastery. We will be running 5 sessions before the end of the academic year. Each session will be led by maths specialists for each area, and delegates can choose to attend all 5 sessions, or pick and choose which sessions will be most useful to them.

**Venue:** All of the courses will take place at Willingdon Community School, Eastbourne.

**Time:** All courses will run from 9am to 12 noon

### Courses:

**1. Thursday 15th June** - The role of representations in the learning and teaching of algebra. The course will give maths teachers great ways of representing algebra including simultaneous equations using Cuisenaire rods, algebraic proof using multilink and multiple representations for factorising, expanding and completing the square - led by Leila Ammour, teacher of KS3 and KS4 maths, Sussex Math Hub KS3 Reasoning Work Group Lead - [Click here to book a place](#)

**2. Tuesday 20th June** - Using bar modelling to solve problems involving fractions, ratio and percentage word problems. Designed to help teachers enable students to identify and analyse relationships as part of solving problems and to be able to reason mathematically. Delegates will explore the use

of bar modelling to solve problems involving fractions, ratio, percentages and algebra - led by Pip Huyton, Independent Maths Consultant - [click here to book a place](#)

**3. Monday 26th June** - Delegates will consider the role of questioning to explore and extend pupils' understanding. They will discuss, develop and design questioning structures and techniques to encourage mastery of skills and promote relational understanding, and explore resources that support, challenge and extend at all levels without the need for multiple resources - led by James Towner, Director of Maths and Technology, SLE in Mathematics and Dave Fielding, Advanced skills teacher and SLE - [click here to book a place](#)

**4. Monday 3rd July** - Delegates will develop a deep understanding of number and place value - including fluent use of mental and written calculation strategies and the use of a standard written algorithm for each of the four operations - led by James Towner, Director of Maths and Technology, SLE in Mathematics and Dave Fielding, Advanced skills teacher and SLE - [click here to book a place](#)

**5. Tuesday 4th July** - Delegates will explore the planning for and teaching of lessons which make effective use of multiple representations and questioning techniques to enable students to gain a deep understanding and mastery of algebra - led by Deb Friis, Subject Leader of Mathematics, SLE in Mathematics - [click here to book a place](#)

# THRIVE TEACHING SCHOOL

Working in partnership with Rother Education Improvement Partnership

## CORE MATHS: FREE IN-HOUSE TRAINING

### Post 16 Maths

The Smith Report is highly likely to reaffirm the government's belief that all post 16 students should take an appropriate maths course. For the majority this will be **CORE MATHS!**

Over the past 3 years, training and support has been offered through the Core Maths Support Programme. This will end in July 2017. If you want to take advantage of this free training then it can be delivered either through an in-house session at your school or college or through regional meetings.

### BOOK YOUR FREE IN-HOUSE TRAINING SESSION TODAY!

For more information or to book a training event for your school, please contact Derek Robinson, the area Lead.

Email: [robinsond@bishopluffa.org.uk](mailto:robinsond@bishopluffa.org.uk)

Phone: 07599 473691



## 2017 Short Story Prize

Re-imagining fairy tales. A competition by the National Literacy Trust in partnership

with Bloomsbury Children's Publishing

### Do you have a new take on a classic fairy tale?

We are calling on budding children's fiction writers to recreate a classic fairy tale, with the chance to have their work published.

Our new writing competition challenges unpublished authors to capture children's imaginations with a short story that gives a well-known fairy tale a modern twist. Entries should be between 2,000 and 4,000 words, aimed at children aged 8 to 12.

The National Literacy Trust gives books to children in the most disadvantaged areas of the UK, helping them enjoy reading. Exciting, engaging and inspiring literature is vital to our work, so we've launched our third writing competition with Bloomsbury Children's Publishing to help uncover new children's storytelling talent.

### The prizes

The top 10 winning stories will be published in an ebook anthology by Bloomsbury Publishing, the distinguished publishers of J.K. Rowling, Neil Gaiman and Louis Sachar

A prize of £200 per winning story

Use of the "Short Story Prize 2017 Winner" logo for the winners' website, social media and publications

Publicity via Bloomsbury's and the National Literacy Trust's communication channels

The ebook anthology will be sold by Bloomsbury with the royalties from the sales donated to the National Literacy Trust, to help us continue our work.

# THRIVE TEACHING SCHOOL

Working in partnership with Rother Education Improvement Partnership

Entries must be submitted by **5pm on 25 June 2017**. All entrants will receive exclusive writing tips from an award-winning children's author.

## Research NEWS!

Tom Holloway and John Steele of St Richard's are leading the Research Leaders Team at St Richard's and are currently developing a research model with other schools as part of the successful Laurel Trust bid.

The team is supporting research with senior leaders in a number of local primary schools including Glenleigh Park Primary Academy and Heron Park Academy.

Research team members have started their research projects with primary schools on the KS2 to KS3 curriculum in Maths, English, Science and Humanities.

The research outcomes will be shared at the Sussex University Conference in June; the Laurel Trust Research conference on the 11th July in London and at the British Education Research Association Conference held at Sussex University in September 2017

If anybody is interested in the research leaders group in preparation for next year or in support with planning a research enquiry please contact either John or Tom at [mrsteelej@strichardscc.com](mailto:mrsteelej@strichardscc.com) or [mrhollowayt@strichardscc.com](mailto:mrhollowayt@strichardscc.com) or Joanne at [teachingschool@strichardscc.com](mailto:teachingschool@strichardscc.com).

If there are enough interested parties we may be in a position to attain further funding to support schools who wish to participate

## Inclusive Education

### Research related Learning

The Institute of Education run a number of inclusive education learning packages and projects. Currently there is a funded primary pilot around Social,

Emotional and Mental Health. The pilot is a knowledge exchange programme for 3 staff from a school and begins in September. Please contact Joanne for details.

## National and Specialist Leaders in Education

Currently our NLEs and SLEs are working to support schools in the following:

Science at KS1 and 2

English KS4 moderation and developing non specialists

Science – curriculum, planning and assessment

Leadership development

Coaching

Maths Specialist Training

Network development

Initial Teacher Training

Facilitator Training

Our next recruitment phase begins in the Summer Term 6 check [Teaching school/School to School Support](#).

## Professional Development

A hand-drawn message that says "Thanks!" in black ink. The text is written in a cursive, slightly slanted font. To the right of the text is a yellow pencil with a pink eraser and a silver ferrule. The pencil is positioned as if it has just finished writing the message.

As our CPD Programme for 2016-17 draws to a close we would like to thank all schools, leaders, teachers and teaching assistants who have participated in the wide range of CPD on offer, have offered their schools to accommodate sessions and enabled us to conduct numerous learning walks. We are now planning for 2017-18 and have collected some ideas. If you have any specific needs

# THRIVE TEACHING SCHOOL

Working in partnership with Rother Education Improvement Partnership

that we can help with please do contact us and we will include it in our new offer.

## Masters Degree in Education Programme.

A unique opportunity to study locally through the University of Brighton.

Thrive TSA is pleased to offer a part-time MA through the University of Brighton, delivered principally in twilight sessions at venues local to the Rother area.

The programme is divided over two years, with an accreditation option for teachers holding M-level credits from their PGCE. The proposed two routes will be:

### With credits:

One x 40 credit 'Professional enquiry' module normally delivered over a 3-6 month period

One x 20 credit module leading to a research proposal for the dissertation

The dissertation (60 credits) normally over one calendar year

### Without credits:

One x 20 credit module providing support for postgraduate study through engagement with a current research in relation to an individually identified area of interest

One x 40 credit module to be negotiated\*

One x 40 credit 'Professional enquiry' module normally delivered over a 3-6 month period but this could be reviewed

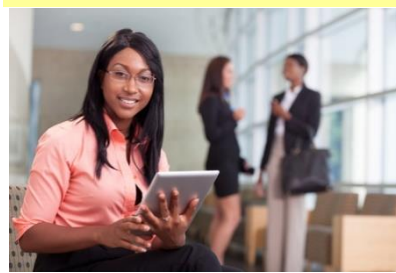
One x 20 credit module leading to a research proposal for the dissertation



The dissertation (60 credits) normally over one calendar year

Starting in September 2017, the MA is rooted in school-based practice, making it an excellent choice for teachers who are reflecting on and developing their practice and initiatives across their school or college.

The aim is that the programme provides a series of structured activities to support the process of enquiry, from smaller and quickly implemented projects to deeper and fuller investigation. This process of enquiry - from identification of a question worthy of exploration via a systematically planned and evaluated intervention/investigation facilitates the practitioner's insight into a professional issue. These may be focused on the same or different issues but are normally linked to the School Improvement Plan.



By locating the programme in local venues, using online access and employing twilight time the costs of the MA have been kept

as low as possible.

Dependent on cohort size the maximum cost will be approximately £1750 per annum, and the minimum will be approximately £1300 per annum. With average UK fees for M-level courses currently estimated at £3000 per annum, this programme represents substantial value for money.



**University of Brighton**

# THRIVE TEACHING SCHOOL

Working in partnership with Rother Education Improvement Partnership

To register an expression of interest please contact: Joanne at [teachingschool@strichardscc.com](mailto:teachingschool@strichardscc.com) providing the potential participant's name, contact email and current role in school.